

Cboe Europe Equities Trade Reporting Services (BXTR) trades can be found on Bloomberg terminals. The screen shots below detail where to find BXTR trades on Bloomberg terminals.

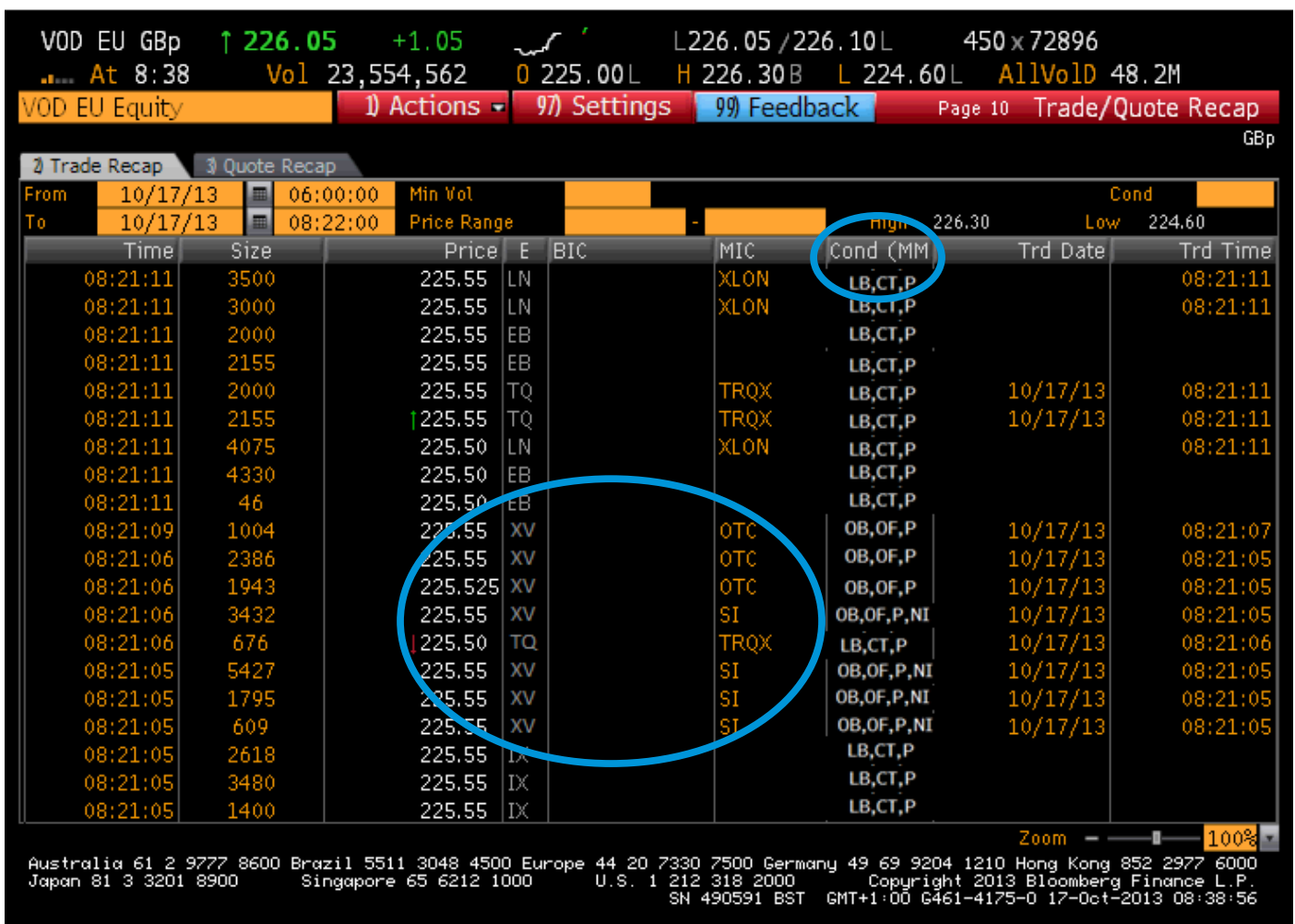
The Exchange code for BXTR (MIC: BOTC) is 'XV' and ticker root is the same as other OTC venues such as BOAT ('XB').

For example:

To view Vodafone OTC trades reported to BXTR, type VOD XV Equity QR<GO>

BXTR trades and SI quotes will be included as part of the Cboe Level 1 real-time entitlement (Type EIS BCX1<GO> for details) as well as being included as a Tier 2 contributor to the EU Super-Composite (in line with other OTC reporting venues).

Figure 1: QR<Go> displays 'XV' exchange code for BXTR and MMT Condition Codes



See the following pages for more screenshots.

Figure 2: MMT condition codes can be displayed in the Quote Recap screen (e.g. VOD EU Equity QR <GO>). To display MMT codes : Settings, select 'Market Model Typology (MMT)' option for 'Condition Code display' and 1) Update to save.

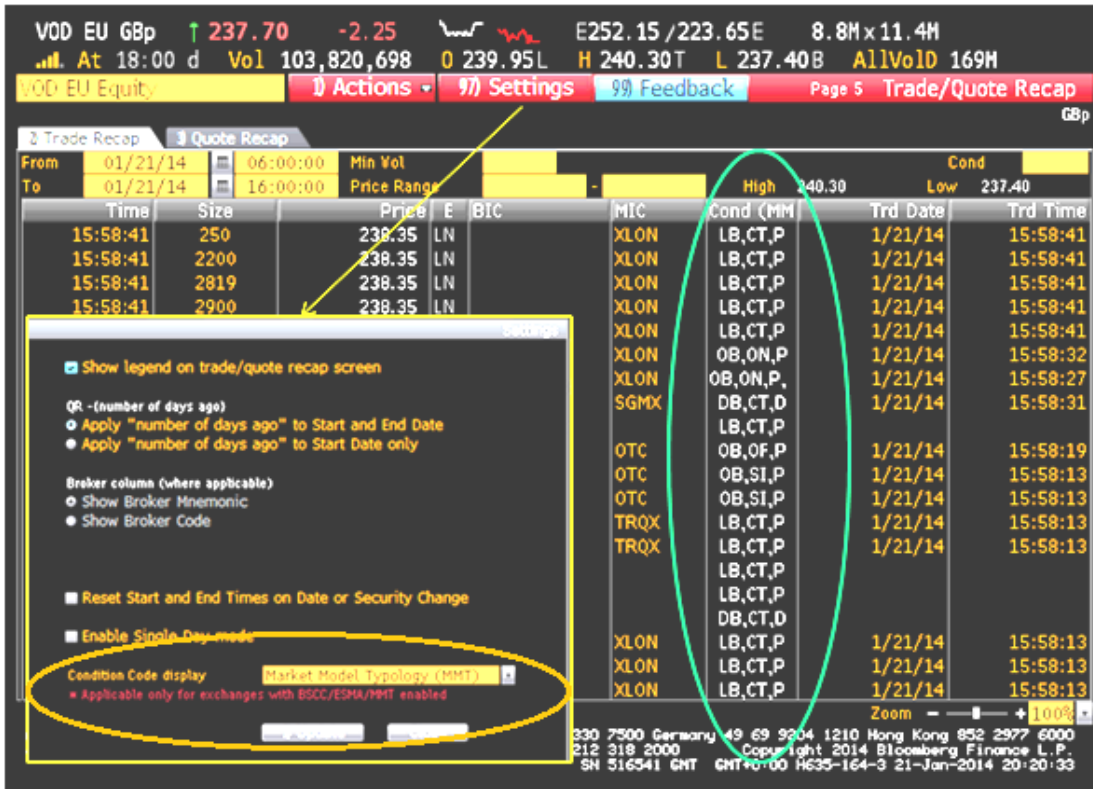


Figure 3: To view Systematic Internaliser quotes for Vodafone from BXTR, type VOD XV Equity MDM <GO> and click on the order book tag.

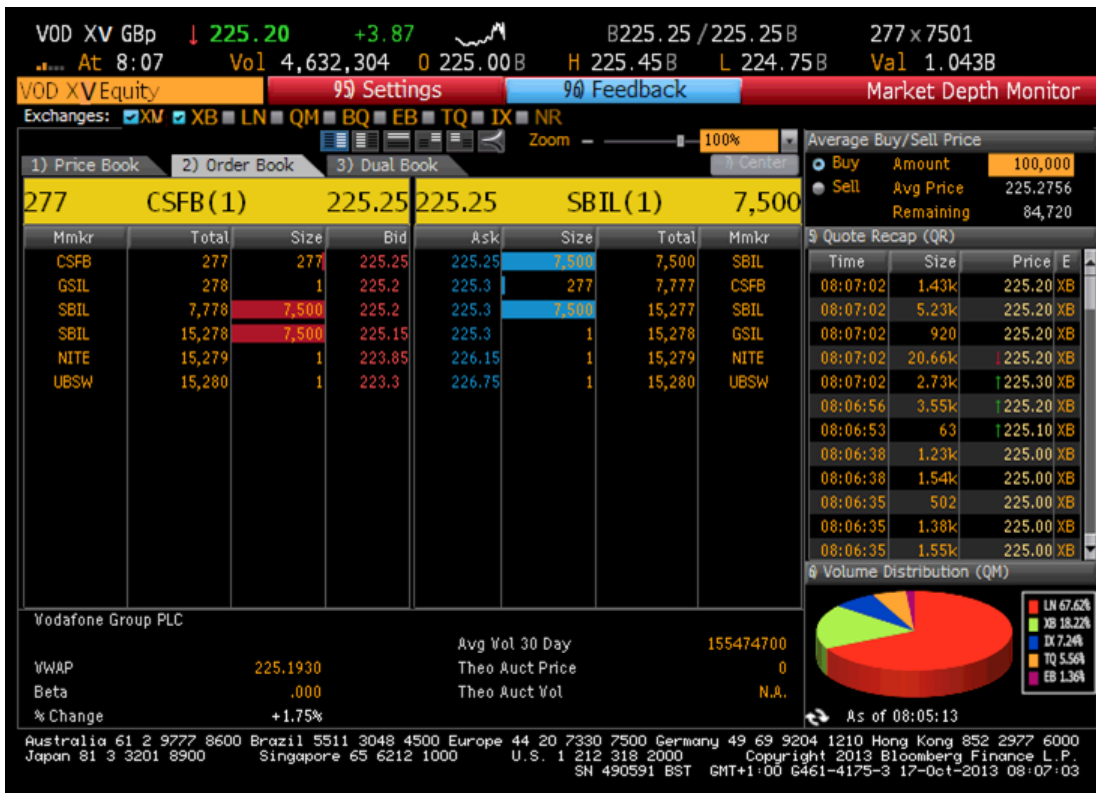


Figure 4: To display Last, Volume, VWAP from BXTR when Primary Tickers are loaded in the Launch Pad Monitor - RH click in Column Header, select 'Edit Column Over-rides', check 'Exchange box, type XV and click 'Update'.

Ticker	Volume	% Cust Vol	Volume (IX)	% Cust Vol	Volume (EB)	% Cust Vol	Volume (S1)	% Cust Vol	Volume (TQ)	% Cust Vol	Cust Vol
DAI GY	477657	54.67%	290769	33.28%	65271	7.47%	4072	.47%	35915	4.11%	873684
STAN LN	293904	42.73%	225202	32.74%	53889	7.83%	939	.14%	113943	16.56%	687877
RB/ LN	112546	40.59%	87720	31.64%	28648	10.33%	6732	2.43%	41625	15.01%	277271
BATS LN	197140	50.59%	122625	31.47%	29546	7.58%	110	.03%	40263	10.33%	389684
TSCO LN	1240471	53.7%	695911	30.13%	92699	4.01%	13084	.57%	267731	11.59%	2309896
ABI BB	166146	56.06%	88533	29.87%	10615	3.58%	1287	.43%	29766	10.04%	296347
RIO LN	668871	57.14%	336874	28.78%	63268	5.4%	6834	.58%	94713	8.09%	1170560
BAYN GY	331909	64.9%	141413	27.65%	18268	3.57%	933	.18%	18894	3.69%	511417
DGE LN										8.89%	1243981
BARC LN										13.45%	13039236
CSGN VX										9.03%	1328810
VOD LN										10.33%	13906794
FP FP										5.7%	858982
DBK GY										3.99%	1689592
AI FP										11.15%	223687
AZN LN										11.93%	406057
BP/ LN										14.05%	5415357
HSBA LN										8.53%	3110060
SAP GY										6.05%	1220667
SU FP										9.58%	443194
SIE GY										2.67%	357762
ERICB SS	2841032	58.38%	1073119	22.05%	543369	11.17%	18672	.38%	390068	8.02%	4866260
CFR VX	144848	55.71%	57178	21.99%	24549	9.44%	3688	1.42%	29740	11.44%	260003
BLT LN	1063562	60.85%	383321	21.93%	105312	6.02%	10352	.59%	185412	10.61%	1747959
ZURN VX	67293	60.09%	23499	20.98%	10704	9.56%	1198	1.07%	9295	8.3%	111989
NG/ LN	779584	60.3%	269886	20.88%	84290	6.52%	2831	.22%	156185	12.08%	1292776
BG/ LN	999550	53.4%	386742	20.66%	226801	12.12%	12726	.68%	246011	13.14%	1871830
UNA NA	777796	61.41%	257016	20.29%	91251	7.2%	5682	.45%	134768	10.64%	1266513
ALV GY	248748	64.02%	78684	20.25%	26387	6.79%	327	.08%	34412	8.86%	388558

Figure 5: To track the most active securities reporting to BXTR in 1, 5, 15 or 60 minute time intervals type MOST XV<GO>.

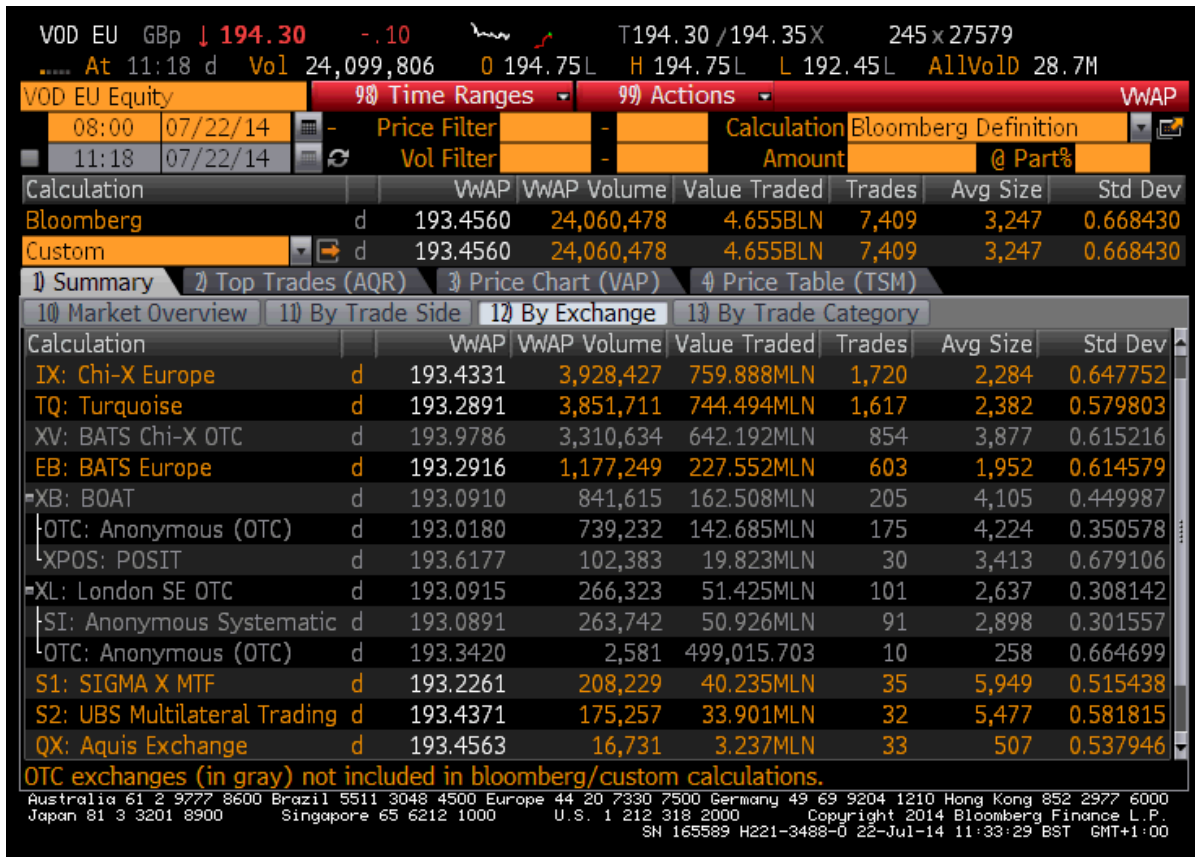
<HELP> for explanation.
Screen saved as F:\Earnings Estimates\most.gif

Security	Last	%Chg	Volume	Vol 5'	News (As of 08:23:26)
1) Vodafone Group PLC	225.725	1.98%	32.36M	26.2M	EE Introduces 4G Offer in
2) Barclays PLC	280.50	-1.07%	2M	545.01k	Short RBS, Go Long Lloyd
3) Koninklijke KPN NV	2.20	-9.47%	6.92M	407.99k	Billionaire Slim's Europe
4) Ziggo NV	30.643	1.43%	303.8k	216.58k	Ziggo Turns Down Liberty
5) Telenor ASA	145.60	1.28%	454.63k	145.76k	TeliaSonera Third-Quarte
6) Abengoa SA	2.40	-8.46%	100k	100k	Abengoa Share Sale Said
7) Abengoa SA	1.847	-8.64%	1.2M	86.86k	Abengoa Share Sale Said
8) Atlas Copco AB	187.20	.10%	129.63k	85.25k	Atlas Copco Buys Archer
9) InterOil Exploration	2.095	13.85%	100.7k	84.7k	Interoil Exploration & Pro
10) Lloyds Banking Grou	76.65	.14%	1.48M	81.24k	Barclays Joins Lloyds as
11) SKF AB	172.70	.66%	100.01k	63.19k	SKF AB Downgraded to 'B
12) BP PLC	442.45	-.66%	164.03k	79.15k	Ineos To Present Proposa
13) UBISOFT Entertainm	8.175	2.19%	9.89k	70.06k	Click to Refresh News
14) Bank of Ireland	.256	7.20%	334.41k	57.28k	Bank of Ireland May Rais
15) Petroleum Geo-Serv	70.10	-1.14%	55.77k	53.32k	Click to Refresh News
16) Iberdrola SA	4.536	-.45%	522.34k	50.36k	U.K. to Back Chinese Co.'
17) Iberdrola SA	4.536	-.45%	522.34k	50.36k	U.K. to Back Chinese Co.'
18) International Consoli	351.40	.14%	110.9k	39.94k	Finnair Says Japanese Go
19) Alcatel-Lucent/Fran	2.695	-.53%	150.69k	38.6k	Alcatel-Lucent addresses
20) SABMiller PLC	3175.50	4.46%	293.62k	38.34k	SABMiller First-Half Sales
21) SABMiller PLC	3175.50	4.46%	293.62k	38.87k	SABMiller First-Half Sales
22) Eni SpA	17.73	-.67%	42.51k	34.83k	Europe Leads Global Refi
23) Deutsche Bank AG	36.34	.38%	67.75k	33.1k	Deutsche Bank Mortgage

Australia 61 2 9777 8600 Brazil 5511 3048 4500 Europe 44 20 7330 7500 Germany 49 69 9204 1210 Hong Kong 852 2977 6000
Japan 81 3 3201 8900 Singapore 65 6212 1000 U.S. 1 212 318 2000 Copyright 2013 Bloomberg Finance L.P.
SN 490591 BST GMT+1:00 6461-4175-2 17-Oct-2013 08:24:52

Figure 6: To see VWAP broken down by Trade Category type e.g. VOD EU Equity VWAP TCAT <Go> and by Exchange type e.g. VOD EU Equity VWAP EXCH <Go>.

Cboe trades are not currently included in the default (On Exchange) VWAP calculations but are included in 'All Trades' VWAP.



Sales
 +44 20 7012 8906
saleseurope@Cboe.com

Trade Desk
 +44 20 7012 8901
tradedeskeurope@Cboe.com

Cboe Europe Limited is a Recognised Investment Exchange regulated by the Financial Conduct Authority. Cboe Europe Limited is a wholly-owned subsidiary of Cboe Global Markets, Inc. and is a company registered in England and Wales with Company Number 6547680 and registered office at The Monument Building, 11 Monument Street, London EC3R 8AF. This has been established for information purposes only. None of the information concerning the services or products described in this document constitutes advice or a recommendation of any product or service. To the extent that the information provided in this document constitutes a financial promotion as defined by section 21 of the Financial Services and Markets Act 2000, it is only directed at persons who qualify as a Professional Client or Eligible Counterparty. Persons who do not qualify should not act on or rely upon it.